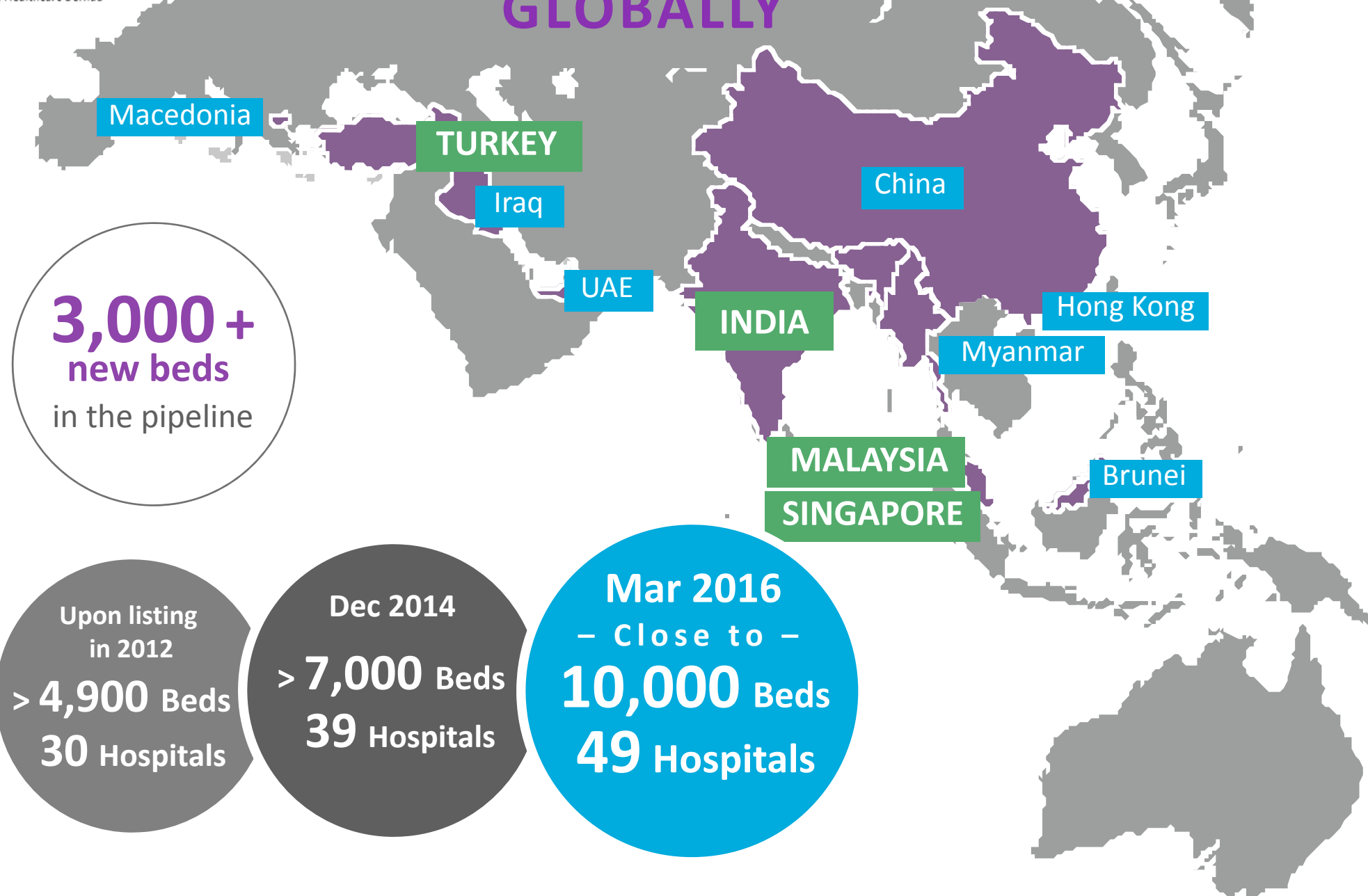




DEFINING HEALTH CARE

6th Annual General Meeting 2016
Kuala Lumpur 27 May 2016

WIDENING OUR REACH GLOBALLY



MALAYSIA & SINGAPORE

Pantai Hospital Sungai Petani

Gleneagles Kota Kinabalu

Pantai Hospital Penang
Gleneagles Penang

MALAYSIA

Pantai Hospital Manjung

Pantai Hospital Ipoh

Pantai Hospital Kuala Lumpur Gleneagles Kuala Lumpur
Pantai Hospital Cheras

Pantai Hospital Ampang
Pantai Hospital Klang

Pantai Hospital Ayer Keroh

Pantai Hospital Batu Pahat

Gleneagles Medini

SINGAPORE

Gleneagles Hospital
Mount Elizabeth Hospital
Mount Elizabeth Novena Hospital
Parkway East Hospital

ACIBADEM

TURKEY & MACEDONIA

MACEDONIA

Acıbadem Sistina Hospital

Acıbadem Taksim Hospital

Acıbadem Atakent University Hospital

Acıbadem Fulya Hospital

Acıbadem Maslak Hospital

Acıbadem Kadıköy Hospital

Acıbadem Kozyatağı Hospital

Acıbadem Bakırköy Hospital

Acıbadem Kocaeli Hospital

Acıbadem International Hospital

Aile Hastanesi

Acıbadem Bursa Hospital

TURKEY

Acıbadem Ankara Hospital

Acıbadem Eskişehir Hospital

Acıbadem Kayseri Hospital

Acıbadem Bodrum Hospital

Acıbadem Andana Hospital

LARGEST
LISTED COMPANY

SGX ALL HEALTHCARE INDEX

SGD17.7 billion as at end-Dec 2015)

> Index weight of 10.6% within
the top 10 constituent

3RD BEST
PERFORMING STOCK

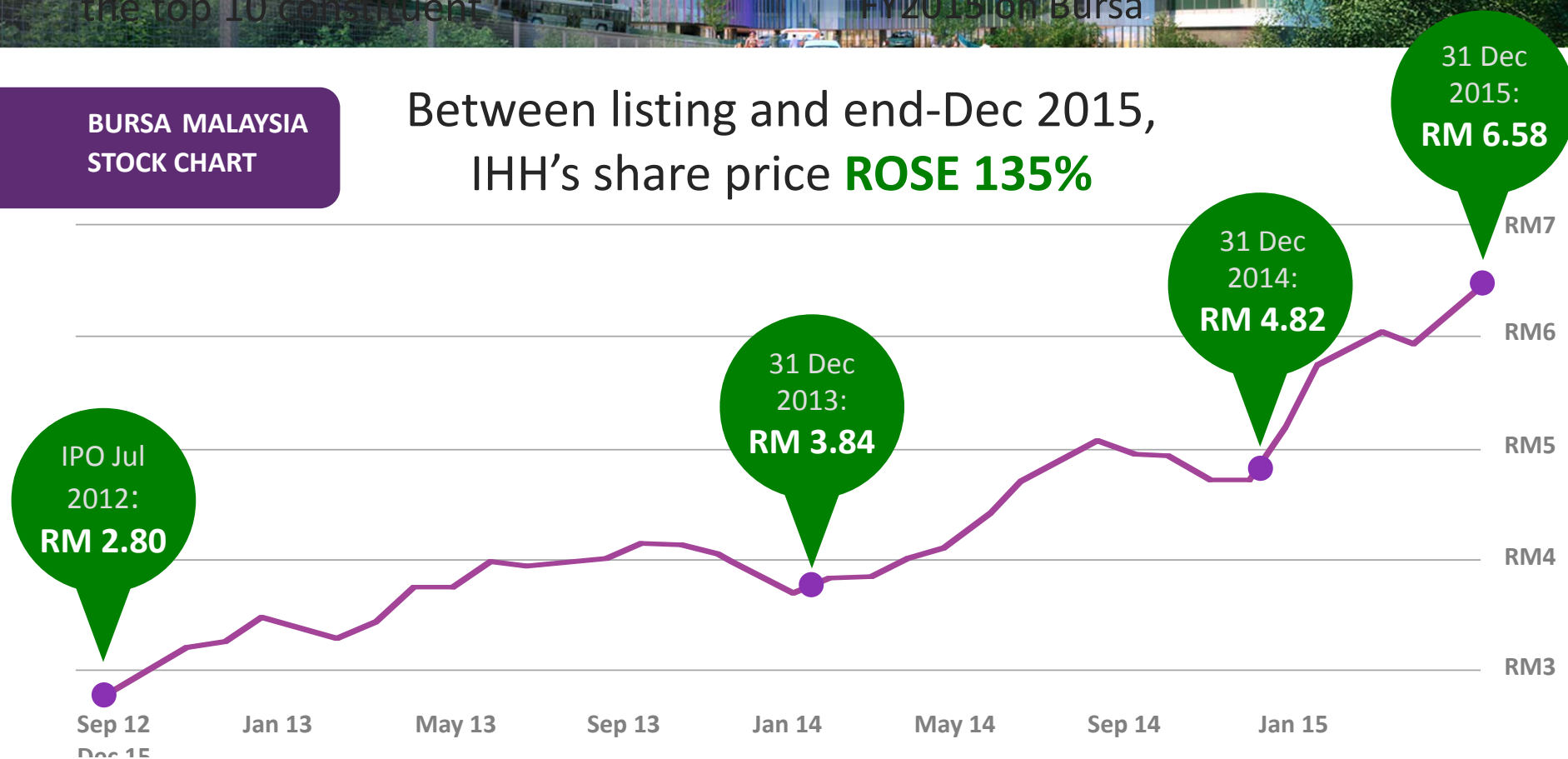
FTSE BURSA
M'SIA KLCI INDEX

(RM53.8 billion as at end-Dec 2015)

> Share price increased 38% in
FY2015 on Bursa

BURSA MALAYSIA
STOCK CHART

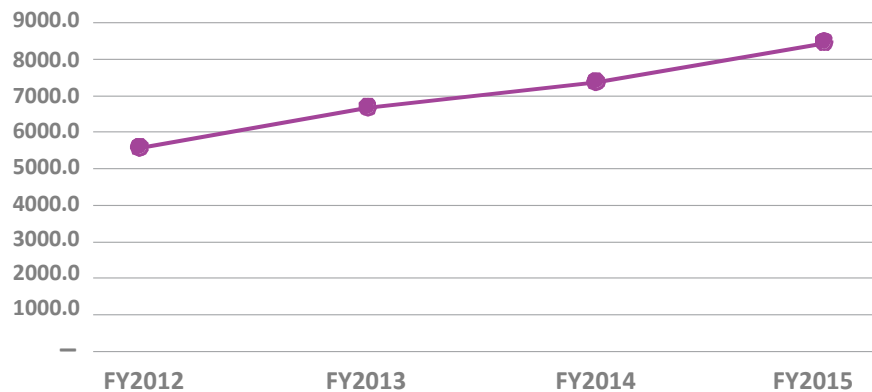
Between listing and end-Dec 2015,
IHH's share price **ROSE 135%**



CONSISTENT DOUBLE DIGIT GROWTH

Revenue

CAGR  **14%**

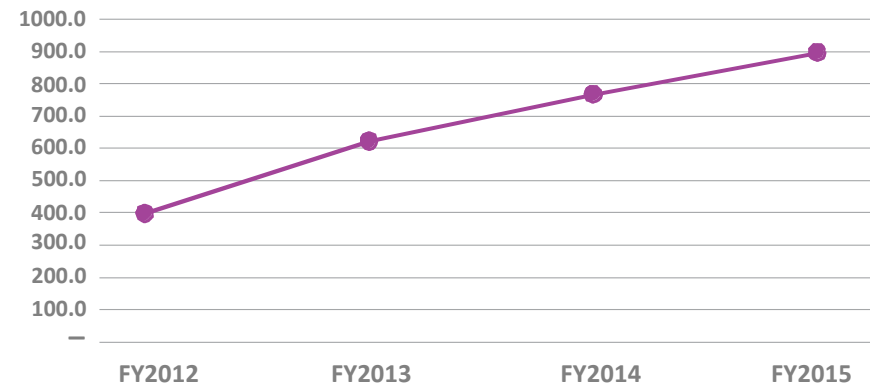


**Sustained strong performance
and healthy fiscal position**

PATMI

(Excl EI)

CAGR  **31%**



**Consistent double digit growth
from IPO to 2015**

Both CAGR & Year-on-Year basis

- The above excluded the sale of the Mt. Elizabeth Novena medical suites in 2012 and 2013

Achieved Steady
Growth in **2015**

STRONG FINANCIAL AND OPERATIONAL PERFORMANCE

(excluding PLife REIT's results)



Revenue
Growth



EBITDA
Growth



PATMI
(excl. EI)
Growth

Robust Performance
In **Q1 2016**

DOUBLE-DIGIT REVENUE AND EBITDA GROWTH

(excluding PLife REIT's results)



Revenue
Growth



EBITDA
Growth



PATMI
(excl. EI)
Growth

PROPOSED DIVIDEND

First and final
single-tier cash
dividend of 3 SEN
to be paid on
18 July 2016



THIS IS AFTER CONSIDERING

Level of
cash and cash
equivalents

Available retained
earnings

Projected
levels of capital
expenditure

Other
investments

2015

FINANCIAL
HIGHLIGHTS

MALAYSIA

▲
11.9%
Revenue
Intensity

▼
0.9%
Inpatient
Admissions

Revenue
Grew **18%** To
RM 5.2 billion

EBITDA
Grew **14%** To
RM 1.3 billion

SINGAPORE

▲
2.7%
Revenue
Intensity

▲
4.9%
Inpatient
Admissions

2015

FINANCIAL
HIGHLIGHTS

TURKEY

▲
15.3%

Revenue
Intensity

▼
0.6%

Inpatient
Admissions

Revenue
Grew **11%** To
RM 3.0 billion

EBITDA
Grew **9%** To
RM 521.0 million



Revenue contribution

From new hospitals
Acibadem Atakent
Acibadem Taksim

Ramp-up of
Acibadem Bodrum
Acibadem Ankara

ACIBADEM

Turkey | Macedonia

2015

FINANCIAL
HIGHLIGHTS

Total
>18,000
in student
population

Revenue growth
driven by higher
student intake and
tuition fees



Revenue
Grew **5%** To
RM 229.3 million

EBITDA
Grew **5%** To
RM 80.6 million



Salak South

**Opening of IMU
Community
Centre at
Salak Park Plaza**

COMPLETED PROJECTS MALAYSIA



Gleneagles Kota Kinabalu



Gleneagles Medini



Pantai Hospital, Kuala Lumpur, Block A

NEW HOSPITALS

Gleneagles
Kota Kinabalu

250

Beds

Gleneagles
Medini

150

Beds

EXPANSIONS

Gleneagles
Kuala Lumpur

+100

Beds

Pantai Hospital
Kuala Lumpur Block A

200 / 8

Consultant Suites / Centres of Excellence

NEW BEDS

Expect to add

360

Beds over
3 years



COMPLETED
PROJECTS
TURKEY



Acibadem Maslak



Acibadem Taksim

NEW HOSPITAL

Opened
Acibadem Taksim
In October
Turkey's **1st** Hospital

Equipped with a
**Modular Operating
Room System**

ENHANCED SERVICE OFFERING



Comprehensive
Oncology Centres:

Acibadem Bodrum

– AND –

Acibadem Eskisehir



Enhanced diagnostic
and treatment
capabilities of cancer:

Acibadem Sistina

ACIBADEM

GROWTH IN
2016
AND BEYOND



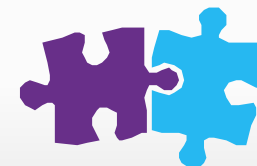
ENHANCE
SERVICE OFFERINGS
IN EXISTING HOSPITALS



RAMP UP HOSPITALS
OPENED IN 2014 & 2015 TO
ACHIEVE OPERATING LEVERAGE



CONTINUE TO EXPAND
INTERNATIONAL FOOTPRINT
TO SUPPORT GROWTH
IN DEMAND



INTEGRATE
NEW ACQUISITIONS



GROWTH IN
2016
AND BEYOND

Global Health City Chennai

Continental Hospitals Hyderabad

INDIA

4th

HOME MARKET

CAPACITY
2,000+
LICENSED BEDS

ACQUIRED

73.4%

EQUITY INTEREST
ON A FULLY DILUTED BASIS

GLOBAL HOSPITALS
(DECEMBER 2015)

ACQUIRED

51%

STAKE IN
CONTINENTAL
HOSPITALS
(MARCH 2015)



LEADING TERTIARY
AND QUATERNARY
CARE CHAIN IN INDIA

RENOWNED FOR
NICHE AND COMPLEX
PROCEDURES:

Liver and multi-organ
transplants, upper
gastrointestinal surgery

GROWTH IN
2016
AND BEYOND

HONG KONG



**Gleneagles
Hong Kong**
on track to open
in Q1 2017



500
Beds
>35
Specialties

1st

Private hospital
to be commissioned
in Hong Kong since 1995

GROWTH IN
2016
AND BEYOND



CHINA

PARKWAYHEALTH CHENGDU HOSPITAL



350 bed

Hospital
(Expected Completion
second half 2017)

IHH's first
tertiary facility in
Western China

Located at
**Chengdu East High Speed
Railway Station**



Hospital to offer obstetrics & gynaecology,
paediatrics, cardiology, orthopaedics,
ophthalmology and internal medicine

AWARDS & ACCOLADES 2015

Corporate Award

Forbes Asia's Fabulous 50 companies

Euromoney 2015

- Overall Best Managed Company in Malaysia
- Overall Best Managed Company in Asia, Pharmaceutical/Healthcare Sector

The Asset Corporate Awards 2015

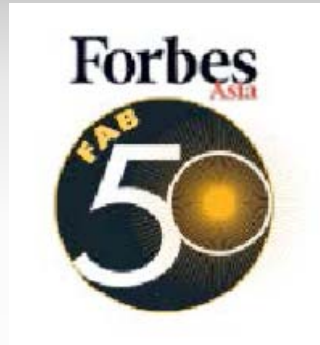
- Gold Award for Excellence in Governance, Social Responsibility And Investor Relations

IR Magazine Awards South East Asia

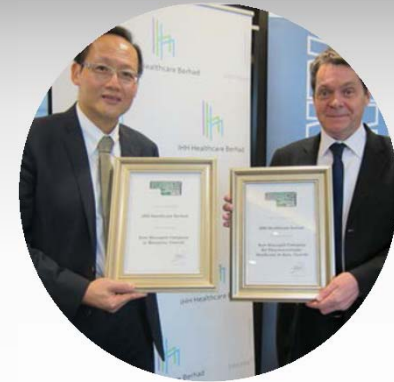
- Best in sector: Healthcare; Best Investor Relations by a Malaysian Company

Minority Shareholder Watchdog Group (MSWG)

- Top Corporate Governance Award for Industry Excellence Healthcare



IR Magazine Awards
South East Asia



Euromoney Awards

Individual Award

National Award for Management Accounting in Malaysia

- CEO of the Year Award

14th CNBC Asia Business Leaders Awards

- Asia Innovator of the
Year Award
- Dr Tan See Leng

CORPORATE
-SOCIAL-
RESPONSIBILITY
IN 2015

CARING FOR THE COMMUNITY



AİLELERİN
UMUT'U
GERÇEK
OLUYOR
(Dreams Coming True)



life renewed

PINK OCTOBER:
Support for Breast Cancer
Awareness

Nation wide Promotion
of Organ Donation

Provide relief for
flood victims



Strong track record,
an experienced
management team and
phased growth
to deliver long-term
sustainable value to
our stakeholders



Thank You!

ihhhealthcare.com

DEFINING HEALTH CARE

6th Annual General Meeting 2016
Kuala Lumpur 27 May 2016